



RBSE

— CHAPTERWISE PYQ —

BIOLOGY

— PREVIOUS YEARS' QUESTIONS —

2013 - 2026



Class
12



Chapterwise
Questions



Board Exam
Focused



Smart Practice
Better Scores

Biology

1. Sexual Reproduction in Flowering Plants	2
2. Human Reproduction.....	5
3. Reproductive Health.....	8
4. Principles of Inheritance and Variation	10
5. Molecular Basis of Inheritance.....	13
6. Evolution	17
7. Human Health and Disease	19
8. Microbes in Human Welfare	23
9. Biotechnology: Principles and Processes	26
10. Biotechnology and its Applications.....	29
11. Organisms and Populations.....	31
12. Ecosystem	33
13. Biodiversity and Conservation	35

01**SEXUAL REPRODUCTION IN FLOWERING PLANTS****[Section-A]****Multiple Choice Questions :-**

1. In which of the following perisperm is found ? [1M]
(A) Beetroot (B) Pea
(C) Groundnut (D) Sunflower [RBSE 2022]
2. An example of a non-albuminous seed is- [0.5M]
(A) Wheat (B) Maize
(C) Pea (D) Castor [RBSE 2024]
3. An example of a false fruit is - [0.5M]
(A) Mango (B) Apple
(C) Kiwi (D) Watermelon [RBSE 2025]
4. An example of a parthenocarpic fruit is: [0.5M]
(A) Banana (B) Strawberry
(C) Apple (D) Walnut [RBSE 2026]
5. Water pollinated plant that grows in fresh water is - [0.5M]
(A) Zostera (B) Vallisneria
(C) Eelgrass (D) Mangrove [RBSE 2026]

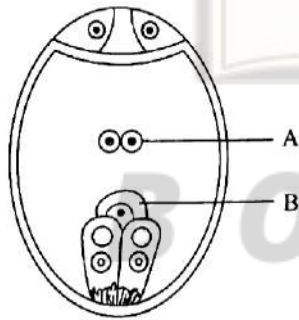
Fill in the Blanks :-

1. Microspore forms the _____ gametophyte after its germination. [1M]
[RBSE 2021]
2. The central cell after triple fusion becomes the _____. [0.5M]
[RBSE 2024]
3. A typical dicotyledonous embryo consists of an _____ and two cotyledons. [0.5M]
[RBSE 2025]

Very Short Answer Type Questions:-

4. Write the difference between chasmogamous and cleistogamous flowers. [1M]
[RBSE 2013]

5. What is the ploidy of endosperm in angiosperms ? [1M]
(RBSE 2014)
6. Why do pollen grains remain preserved for long time ? [1M]
(RBSE 2015)
7. What is emasculation? [1M]
(RBSE 2016)
8. Define apomixis. [1M]
(RBSE 2018, RBSE 2024)
9. Define Agamospermy. [1M]
(RBSE 2019)
10. Write the name of four flower parts. [1M]
(RBSE 2020)
11. Explain double fertilization in angiosperm plants. [1M]
(RBSE 2021)
12. Define apomixis. [1M]
(RBSE 2018, RBSE 2024)
13. Write the agent of pollination in Hydrilla plant. [1M]
(RBSE 2025)
14. What does 'A' and 'B' represent in the above mention diagram of the mature embryo sac? Write name for each. [1M]
(RBSE 2026)



[Section-B]

Short Answer Type Questions: -

15. Describe the structure of megasporangium. [1.5M]
(RBSE 2024)
16. Draw labelled diagram of transverse section of a pollen sac. [1.5M]
(RBSE 2024)

[Section-C]

Long Answer Type Questions: -

17. Describe pollen-pistil interaction in detail. [3M]
(RBSE 2014)
18. What is endosperm? Describe free nuclear endosperm and cellular endosperm. [3M]
(RBSE 2013, 2015, 2020)

19. Write down the names of post fertilization events in flowering plants. Describe the process of embryo development. [3M]
(RBSE 2016)
20. Explain in detail the process of development of female gametophyte. Draw diagram. [3M]
(RBSE 2017)
21. Define pollination. Explain wind and water pollination with example. [3M]
(RBSE 2023, RBSE 2018)
22. Describe the structure of Anatropous ovule with diagram. [3M]
(RBSE 2019)
23. Describe the structure of cellular endosperm with diagram. [3M]
(RBSE 2015, RBSE 2013, RBSE 2020)
24. (i) Define pollination.
(ii) Explain double fertilisation.
(iii) Draw a labelled diagram of structure of fertilised embryo sac. [3M]
(RBSE 2023)
25. Define microsporogenesis. Explain the structure of a pollen grain. [3M]
(RBSE 2025)
26. Define megasporogenesis. Explain structure of mature embryo sac. [3M]
(RBSE 2025)
27. Define pollination. Explain chasmogamous and cleistogamous flowers. [3M]
(RBSE 2026)
28. Define agents of pollination. Explain pollination in wind pollinated plants. [3M]
(RBSE 2026)



**BOARD
ZONE**

★ RBSE 2026 ★ TOPPERS



EXCELLENCE. DEDICATION. SUCCESS.

99%



BOARD
ZONE

TANISHA JAIN

99%



BOARD
ZONE

ADITYA RAJ
CHOHAN

98%



BOARD
ZONE

SIMMI CHOUDHARY

*Proudly
Dedicated
by
Students!*



30+ STUDENTS SCORED MORE THAN 90%

96%



MUSTAFA BHAILA

96%



GAURANSH

94%



MITHLESH KR. JHA

93%



RAKSHITA

93%



VINITA RATHORE

93%



KHUSHBU BISHNOI

93%



PRAHLAD YADAV

93%



BHAVY DAMOR

92%



ANUJ SAINI

92%



VISHAL SAIN

92%



GOURAV NAWANI

92%



KHUSHAL LABANA

91%



VARUN LOHAR

91%



ASHISH

91%



ANKIT SHARMA

91%



KOUSHIK UPADHYAY

91%



TAVISH MOHAMMAD

90%



PARTH CHITTORA

90%



SANJOG JAIN

90%



ARMAN ALI

90%



RIDDISH SHARMA

90%



MONIL PRAJAPAT

90%



KESHAV GURJAR

★★★
**ENDLESS
RESULTS
MORE...**

~ Results Claimed by Students ~