



# CLASS 12



RBSE BOARD ZONE

## PREVIOUS YEAR QUESTIONS

CHAPTER-WISE

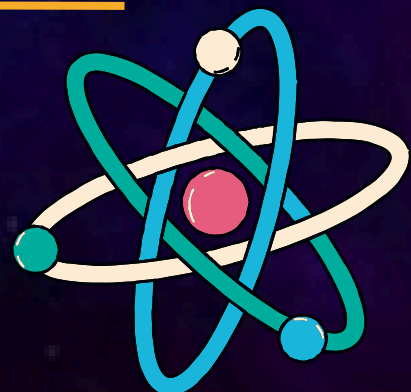
# Physics

ALL QUESTIONS OF LAST 12  
YEAR'S OF RAJASTHAN BOARD

- Available For Hindi & English Medium
- Questions From 2013-2024
- RBSE Examination 2024-25
- Based on Rationalised NCERT 2023-24
- ALL Repeated Questions Are Mentioned

Maniesh Kr Sah

921-6765-400







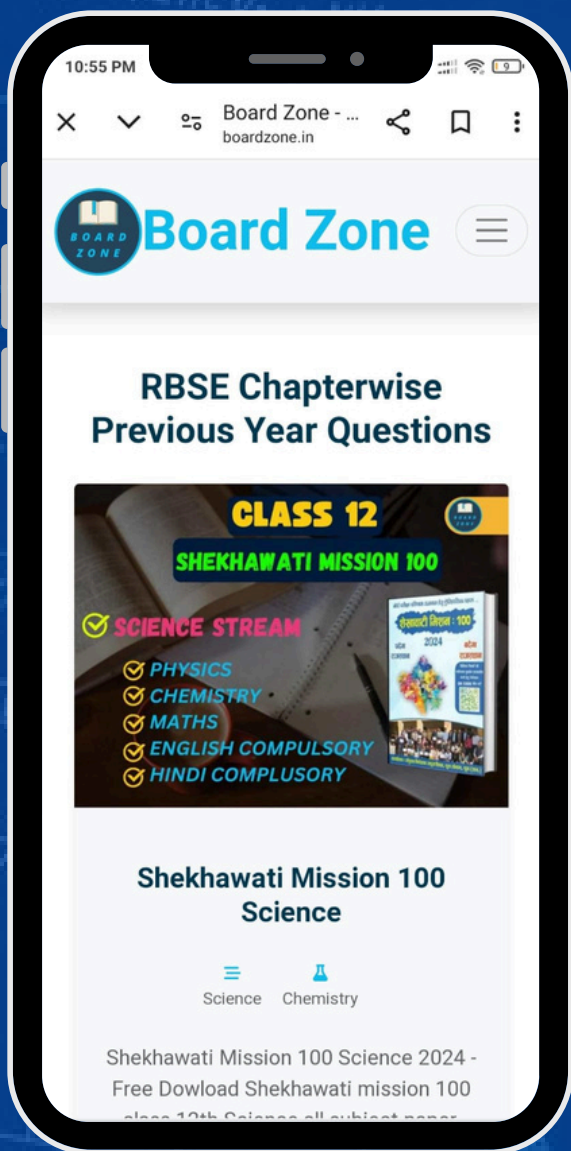
19. The SI value of permittivity of free space or vacuum is-[1M] (RBSE 2023)
- (a)  $9 \times 10^9 \text{ Nm}^2\text{C}^{-2}$  (b)  $9 \times 10^{-9} \text{ Nm}^2\text{C}^{-2}$
- (c)  $8.854 \times 10^{-12} \text{ C}^2\text{N}^{-1}\text{m}^{-2}$  (d)  $8.854 \times 10^{+12} \text{ C}^2\text{N}^{-1}\text{m}^{-2}$
20. A uniformly charged thin spherical shell has an electric field at all points.....inside it.[1M] (RBSE 2023)
21. Show the electric field lines due to a single positive charge ( $q > 0$ ). [1M] (RBSE 2023)
22. Write the value of electric field due to an electric dipole at a point on its axis. [1M] (RBSE 2023)
23. The electric flux on a Gaussian spherical surface of radius 15 cm, drawn with a point charge as the centre, is ' $\phi$ '. If the radius of this surface is tripled then the electric flux passing through the surface will be – [0.5M]
- (A) Zero (B) Infinity
- (C)  $3\phi$  (D)  $\phi$  (RBSE 2024)
24. The field lines of a single positive charge are radially\_\_\_\_\_. (RBSE 2024)  
[0.5M]
25. Derive formula for the electric field due to electric dipole at any point on the equatorial plane. Draw necessary diagram. [3M] (RBSE 2024)
26. Obtain an expression for the electric field at any point due to a uniformly charged infinite plane sheet with the help of Gauss's law. Draw necessary diagram. [3M] (RBSE 2024)

अन्य विषय के **Chapter-wise PYQ**

(Previous Year Questions) खरीदने के लिए हमारी

वेबसाइट **boardzone.in** पर **Visite** करें या हमें

**921-6765-400** पर **व्हाट्सएप** करें।



- **Chapter-wise PYQ**
- **Handwritten Notes**
- **More.....**



**RBSE**

**CBSE**

**MP - BOARD**

**More**