

**CLASS 10**

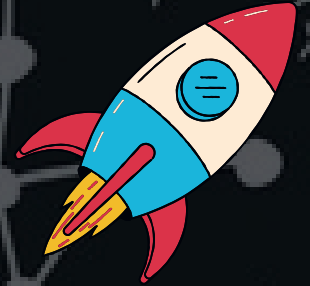


**RBSE BOARD ZONE**

**PREVIOUS YEAR QUESTIONS**

**CHAPTER-WISE**

*(English Medium)*



**MATHEMATICS**

**ALL QUESTIONS OF LAST 12 YEAR'S  
OF RAJASTHAN BOARD**

- **AVAILABLE FOR ENGLISH & HINDI MEDIUM**
- **Based on Rationalised NCERT 2023-24**
- **QUESTIONS FROM 2013-2024**
- **FOR RBSE EXAMINATION 2025**

**Maniesh Kr Sah**

**921-6765-400**



# REAL NUMBERS

## CHAPTER-1

1. Find the H.C.F. of numbers 44 and 99. [1M]  
(RBSE 2013)
2. Find the highest positive integer by which dividing the numbers 396 , 436 and 542 remainders are 5,11 and 15 respectively. [3M]  
(RBSE 2013)
3. Find the H.C.F. and L.C.M. of the numbers 180, 72 and 252. [3M]  
(RBSE 2014)
4. Find the HCF of 96 and 404 by the Prime Factorisation Method. [1M]  
(RBSE 2015)
5. Prove that  $\sqrt{2}$  is an irrational number. [3M]  
(RBSE 2015)
6. Find the HCF of integers 375 and 675 by the prime factorisation method. [1M]  
(RBSE 2016)
7. Prove that  $\sqrt{6}$  is an irrational number. [3M]  
(RBSE 2016)
8. HCF and LCM of two integers are 12 and 336 respectively. If one integer is 48 , then find another integer. [1M]  
(RBSE 2017)
9. Prove that  $\sqrt{3}$  is an irrational number. [3M]  
(RBSE 2017)
10. Write the sum of powers of prime factors of 196. [1M]  
(RBSE 2018)
11. If the product of two numbers is 525 and their H.C.F. is 5, then find their L.C.M. [3M]  
(RBSE 2018)
12. Find the HCF of 68 and 119. [1M]  
(RBSE 2019)
13. Prove that  $7\sqrt{5}$  is an irrational number. [3M]  
(RBSE 2019)

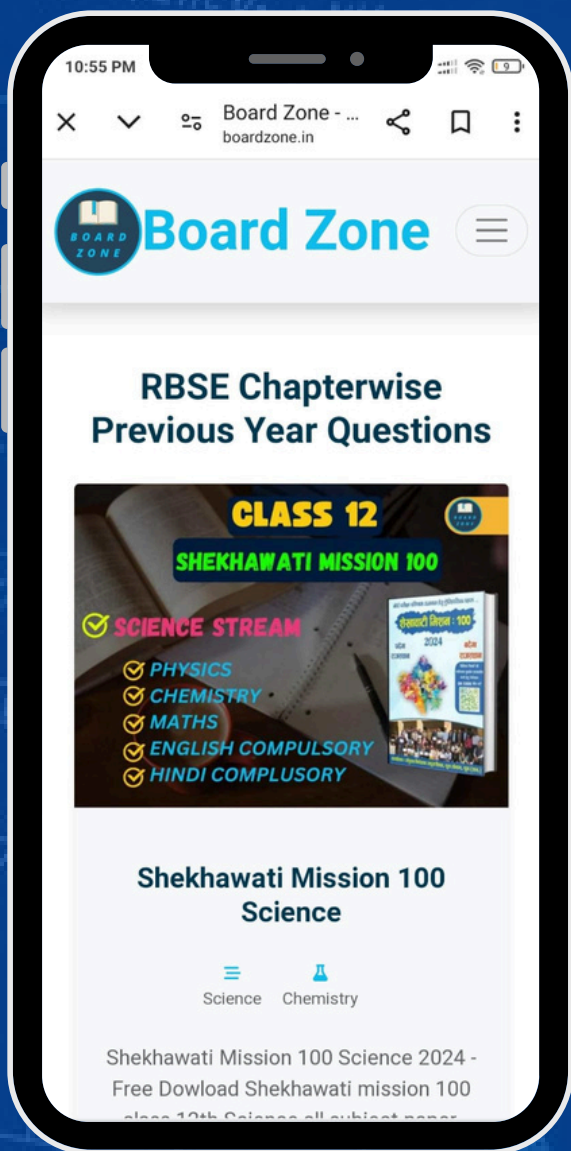
14. If product of two numbers is 12960 and HCF is 18 then find their LCM. [1M]  
(RBSE 2020)
15. Which of the following is an irrational number? [1M]  
(A) 2  
(B) 2.232425....  
(C)  $2.\overline{23}$   
(D) 2.23  
(RBSE 2022)
16. Find the least common multiple (LCM) of numbers 72 and 120. [1M]  
(RBSE 2022)
17. Find the highest common factor (HCF) of two numbers 616 and 32. [2M]  
(RBSE 2022)
18. The sum of the powers of the prime factors of 196 is- [1M]  
(A) 1  
(B) 2  
(C) 4  
(D) 6  
(RBSE 2023)
19. Highest Common Factor (HCF) of 95 and 152 is. [1M]  
(RBSE 2023)
20. The Highest Common Factor of two numbers is 27 and their Least Common Multiple is 162 . If one number is 54 , then the other number is : [1M]  
(A) 81  
(B) 27  
(C) 54  
(D) 18  
(RBSE 2024)
21. If  $x = 2^3 \times 3^2$  and  $y = 2^2 \times 3^2$ , then find the Least Common Multiple (L.C.M.) of  $x$  and  $y$ . [1M]  
(RBSE 2024)
22. Prove that  $\sqrt{5}$  is an irrational number. [2M]  
(RBSE 2024)

अन्य विषय के **Chapter-wise PYQ**

(Previous Year Questions) खरीदने के लिए हमारी

वेबसाइट **boardzone.in** पर **Visite** करें या हमें

**921-6765-400** पर **व्हाट्सएप** करें।



- **Chapter-wise PYQ**
- **Handwritten Notes**
- **More.....**



**RBSE**

**CBSE**

**MP - BOARD**

**More**